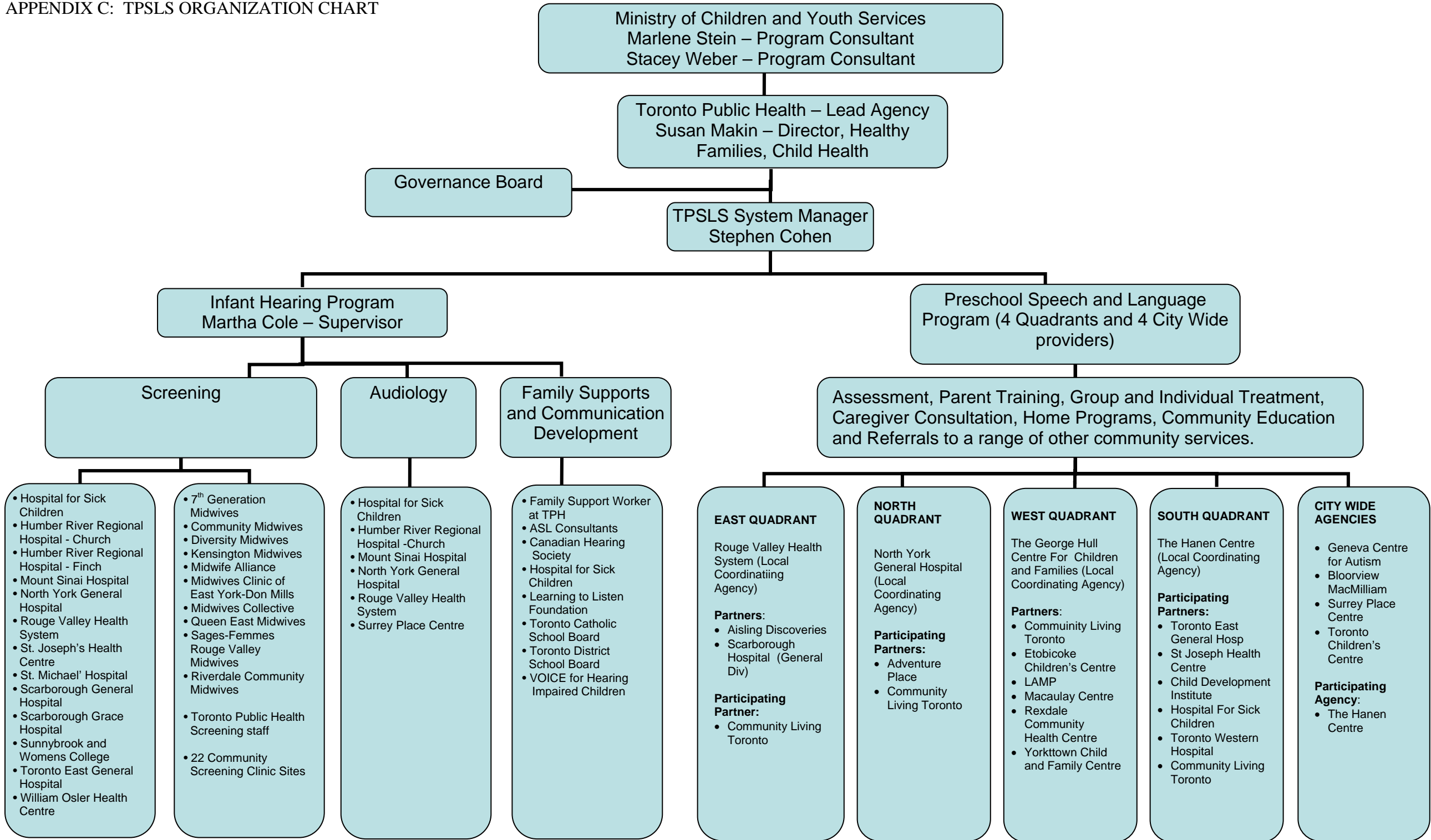


APPENDIX C: TPSLS ORGANIZATION CHART



Ministry of Children and Youth Services
Marlene Stein – Program Consultant
Stacey Weber – Program Consultant

Toronto Public Health – Lead Agency
Susan Makin – Director, Healthy Families, Child Health

Governance Board

TPSLS System Manager
Stephen Cohen

Infant Hearing Program
Martha Cole – Supervisor

Preschool Speech and Language Program (4 Quadrants and 4 City Wide providers)

Screening

Audiology

Family Supports and Communication Development

Assessment, Parent Training, Group and Individual Treatment, Caregiver Consultation, Home Programs, Community Education and Referrals to a range of other community services.

- Hospital for Sick Children
- Humber River Regional Hospital - Church
- Humber River Regional Hospital - Finch
- Mount Sinai Hospital
- North York General Hospital
- Rouge Valley Health System
- St. Joseph's Health Centre
- St. Michael's Hospital
- Scarborough General Hospital
- Scarborough Grace Hospital
- Sunnybrook and Womens College
- Toronto East General Hospital
- William Osler Health Centre

- 7th Generation Midwives
- Community Midwives
- Diversity Midwives
- Kensington Midwives
- Midwife Alliance
- Midwives Clinic of East York-Don Mills
- Midwives Collective
- Queen East Midwives
- Sages-Femmes
- Rouge Valley Midwives
- Riverdale Community Midwives
- Toronto Public Health Screening staff
- 22 Community Screening Clinic Sites

- Hospital for Sick Children
- Humber River Regional Hospital -Church
- Mount Sinai Hospital
- North York General Hospital
- Rouge Valley Health System
- Surrey Place Centre

- Family Support Worker at TPH
- ASL Consultants
- Canadian Hearing Society
- Hospital for Sick Children
- Learning to Listen Foundation
- Toronto Catholic School Board
- Toronto District School Board
- VOICE for Hearing Impaired Children

- EAST QUADRANT**
- Rouge Valley Health System (Local Coordinating Agency)
- Partners:**
- Aisling Discoveries
 - Scarborough Hospital (General Div)
- Participating Partner:**
- Community Living Toronto

- NORTH QUADRANT**
- North York General Hospital (Local Coordinating Agency)
- Participating Partners:**
- Adventure Place
 - Community Living Toronto

- WEST QUADRANT**
- The George Hull Centre For Children and Families (Local Coordinating Agency)
- Partners:**
- Community Living Toronto
 - Etobicoke Children's Centre
 - LAMP
 - Macaulay Centre
 - Rexdale Community Health Centre
 - Yorktown Child and Family Centre

- SOUTH QUADRANT**
- The Hanen Centre (Local Coordinating Agency)
- Participating Partners:**
- Toronto East General Hosp
 - St Joseph Health Centre
 - Child Development Institute
 - Hospital For Sick Children
 - Toronto Western Hospital
 - Community Living Toronto

- CITY WIDE AGENCIES**
- Geneva Centre for Autism
 - Bloorview MacMilliam
 - Surrey Place Centre
 - Toronto Children's Centre
- Participating Agency:**
- The Hanen Centre